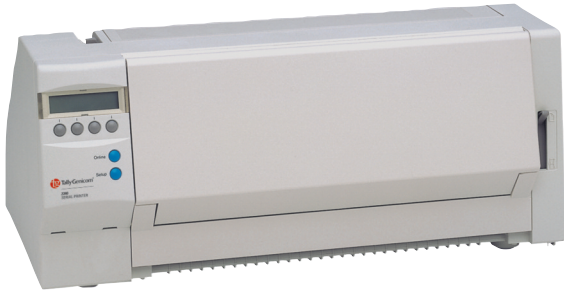


2240/2340 SERIAL MATRIX PRINTERS



**Print speeds up to 500 characters per second
at 12 CPI**

10,000 pages per month workload

24-pin configurations produce letter-quality print

136-column configurations available

Straight paper path means jam free operation

Front load single sheet feed standard

Zero tear-off means no wasted forms

SPECIALLY ENGINEERED “FLAT” PUSH TRACTORS DRIVE

FAST AND AFFORDABLE

Rugged, fast and affordable, the 2240 and 2340 are built to handle multi-part forms with ease. Specially engineered “flat” push tractors drive forms through an uncommonly straight paper path for jam free operation. With accessible, front-load tractors and a platen knob to facilitate forms adjustment, paper loading is quick, and down time minimal. These industrial strength forms printers deliver versatile transaction printing in no time, every time.

MARKETS AND APPLICATIONS

Federal, State and Local Government:

Print tax forms, payroll checks, expense reports, inventory reports, invoices.

Manufacturing, Transportation and Distribution:

Print pick lists, shipping labels and freight bills.

Healthcare:

Handle a wide variety of media including bar code labels for patient charts, prescription labels, pre-printed forms for billing departments.

Available Configuration.....**2240:** Available in 1 configurations
2340: Available in 1 configurations

Print Speed	2240: T9 wire Printhead: At 10, 12 cpi: draft: 413, 500 copy/draft: 310, 310 NLQ: 77, 77; 24 wire Printhead: At 10, 12 cpi: draft: 409, 440 copy/draft: 275, 330 LQ: 92, 110 2340: At 10, 12 cpi: Draft: 409, 440 Copy/Draft: 275, 330 NLQ: 91, 110	Opt'l Paper Handling	Push tractor and automatic sheet feeder
Print Method	Serial Impact, 2240: 80 columns 2340: 136 columns	Number of Copies	2240: 9-wire: 1 + 5; 24-wire: 1 + 3 2340: 9 Pin: 1+5 standard, 1+6 heavy mode; 24 Pin: 1+3 standard, 1+4 heavy mode
Resolution	2240: 9 wire: 144 X 240 DPI. 24 wire: 360 X 360 DPI. 2340: 360 x 360 dpi	Paper Type	Continuous, cut forms (optional feeder)
Character Density	10, 12, 15, 17.1, 20 cpi + elongated	Paper Weight	60 to 120 gm2 continuous forms, 80 to 120 gm2 cut sheet
Line Density	2, 3, 4, 6, 8, 12 lpi	Paper Size	2240: Width: 3" to 10"; Length: continuous forms 3" to 22", cut forms 3" to 14" 2340: Width: 3" to 16.5"; Length: continuous forms 3" to 22"; cut forms 3" to 14"
Character Sets	256 characters, 20 international sets, IBM PC® and Epson®	Physical Weight	2240: 17.6 lbs. 2340: 22 lbs.
Printhead Life	300 million characters	Physical Size	2240: 19" x 9.7" x 7.9" 2340: 24.6" x 9.7" x 7.9"
Printhead Type	2240: 9 wire or 24 wire 2340: 24 wire	Power Voltage	AC 120V +/- 10% or AC 220V - 240V +/- 10%
Memory	64kB	Power Frequency	60Hz or 50Hz
Standard Connectivity	Bi-directional Centronics parallel	Power Consumption	50 watts operating
Optional Connectivity	RS232 serial; RS422 serial; TallyCom+ 10/100BaseT external print server	Compliance	ENERGY STAR® compliant, RoHS, Microsoft, ISO-compliant
Standard Emulation	2240: 9-wire: MTPL*, IBM® Proprinter XL, Epson® FX850+/FX1050+. 24-wire: MTPL*, IBM® Proprinter XL24e, Epson® LQ850+/LQ1050+ /EscP 2340: MTPL*, IBM® Proprinter XL24e, Epson® LQ850+/LQ1050+ /EscP	Workload	Up to 10,000 pages per month
Fonts	2240: 9-wire: Draft, Copy Draft, Courier, Quadrato, OCR A & OCR B, Bar Code + LCP. 24-wire: Draft, Copy Draft, Courier, Roman, San Serif, Prestige, Script, OCR A & OCR B, Bar Codes + LCP 2340: Draft, Copy Draft, Courier, Roman, San Serif, Prestige, Script, OCR A & OCR B, Bar Codes + LCP	Reliability MTBF	12,500 hours @ 100% duty cycle
Consumable	4 million characters	Drivers	Windows 2000, XP, Vista, Server 2003, Server 2008; SAP
STD Paper Handling	Flat push tractors (front/bottom), straight path for continuous forms and labels, auto paper load, auto quick tear, auto view, paper advance knob	Temperature	Operating +10°C to +35°C; Storage -5°C to +45°C
		Humidity	Operating 16% to 73%; Storage 5% to 95% (relative humidity)
		Acoustic	53 dBA
		Warranty	For warranty information go to www.tallygenicom.com
		Option 1	Second front push tractors; front automatic cut sheet feeder
		Option 2	RS-232 Serial Interface; RS-422 Serial Interface; TallyCom+ 10/100BaseT external Print server
		Option 3	Printer stand, paper basket, castors

For further information about our products and services, please visit our website at:
www.tallygenicom.com

Southern Europe, Iberia & Middle East and Africa – PRINTRONIX France Sarl
 13 Rue Salomon de Rothschild, 92150 Suresnes, France
 Tel: +33 (0) 1 46 25 19 00

Northern Europe – PRINTRONIX UK Ltd
 Millars Brook, Unit 3, Molly Millars Lane, Wokingham, Berkshire
 Tel: +44 (0) 118 977 1000

For sales enquiries, please email:
emeasales@printronix.com

Central & Eastern Europe –
 PRINTRONIX Deutschland GmbH
 Goethering 56, D-63067 Offenbach, Germany
 Tel: +49 (0) 69 82 97 06 0

Middle East and Africa
 Jebel Ali Free Zone, PO Box 262746, South Zone, Dubai
 Tel: +971 (4) 8137866

For technical support, please email:
emeasupport@printronix.com

Russia and C.I.S. –
 PRINTRONIX Inc, Moscow Representative Office
 Balakirevsky per., 19, office 106, 105082 Moscow, Russian Federation
 Tel: +7 (495) 737 9387

Customer Support Centre EMEA –
 PRINTRONIX Netherlands BV
 Nieuweweg 283, P.O. Box 163, NL-6600 AD Wijchen, Netherlands
 Tel: +31 (0) 24 64 89 489

